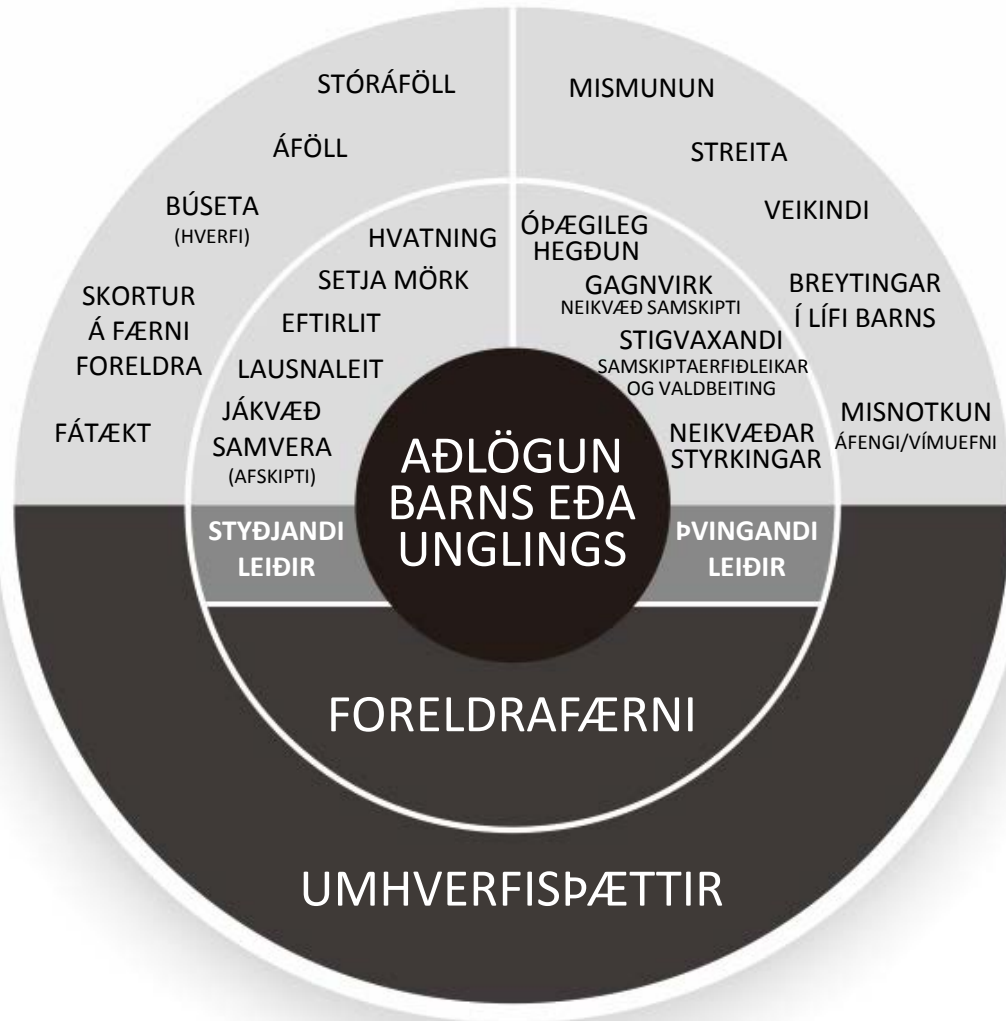
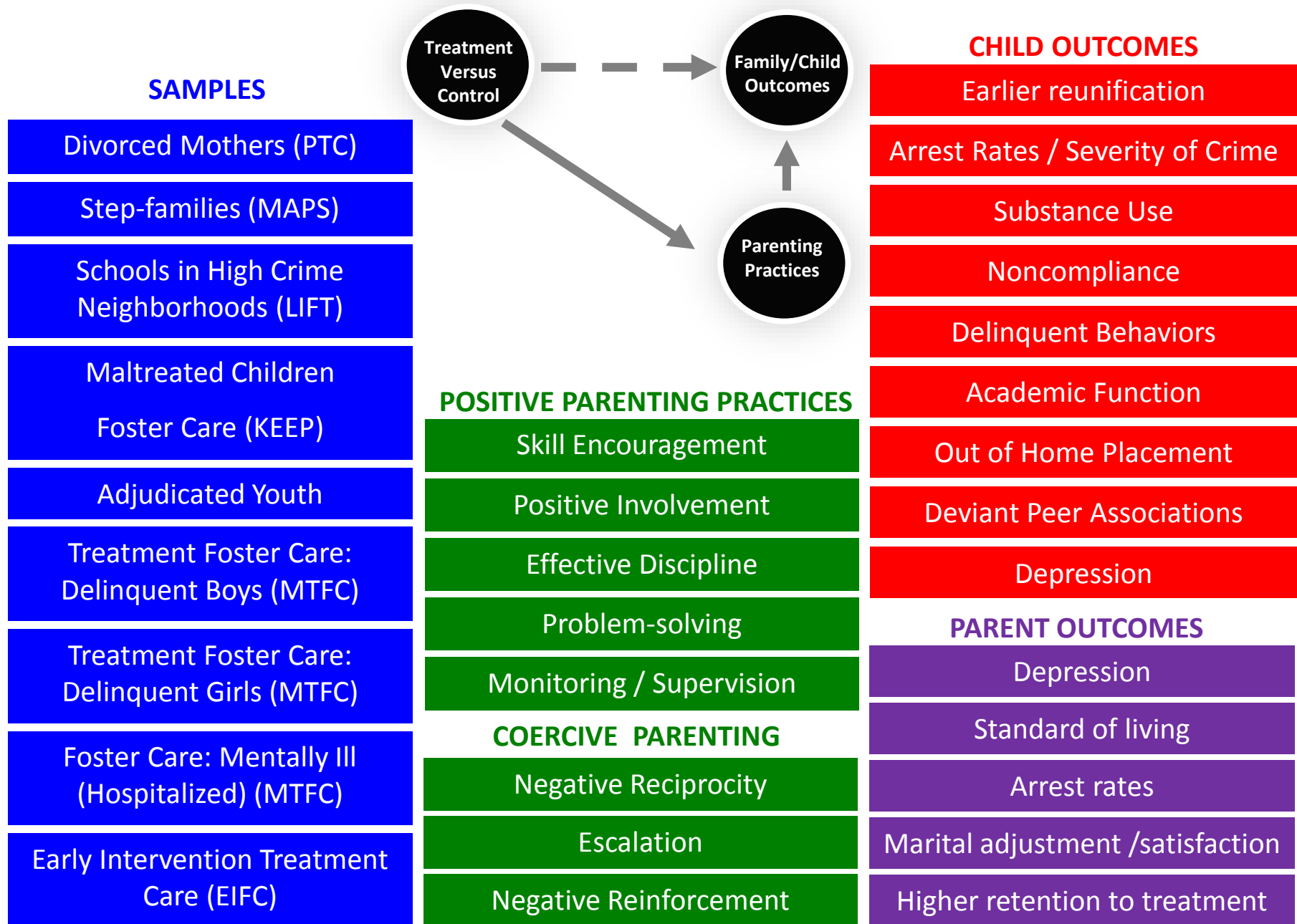


SIL MÓDEL





ÍSLENSKAR NIÐURSTÖÐUR

Heildarfjöldi (N) var 102 fjölskyldur.

RCT-TRIAL: 51 PMTO og 51 SAU.

Einstaklingsmeðferð.

Aldursbilið var 5-12 ára og 73% drengir.

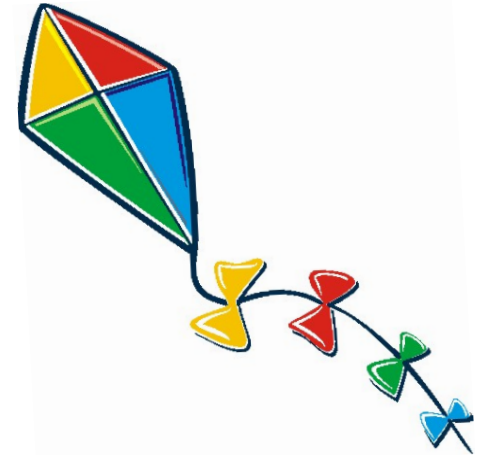
Börn í PMTO hópi sýna minna erfiða hegðun að mati foreldra, eru minna þunglynd að eigin mati og sýna meiri félagsfærni að mati foreldra og kennara en börn í SAU hópi.

VERKFÆRI





PMTO



MEÐFERÐARMENNTUN



PMTO Á ÍSLANDI



2019

UM 60 MEÐFERÐARAÐILAR

References

- Forgatch, M. S., & Patterson, G. R. (2010). Parent Management Training - Oregon Model: An intervention for antisocial behavior in children and adolescents. In J. R. Weisz & A. E. Kazdin (Eds.), *Evidence-based psychotherapies for children and adolescents (2nd ed., pp. 159-178)*. New York: Guilford.
- Forgatch, M. S., Patterson, G. R., DeGarmo, D. S., & Beldavs, Z. G. (2009). Testing the Oregon delinquency model with 9-year follow-up of the Oregon Divorce Study. *Development and Psychopathology, 21*, 637-660. doi: 10.1017/S0954579409000340
- Forgatch, M. S., Patterson, G. R., & Gewirtz, A. H. (2013). Looking forward: The promise of widespread implementation of parent training programs. *Perspectives on Psychological Science, 8*, 682-694. doi: 10.1177/1745691613503478
- Knutson, N. M., Forgatch, M. S., Rains, L. A., & Sigmarsdóttir, M. (2009). *Fidelity of Implementation Rating System (FIMP): The manual for PMTO™*. Implementation Sciences International, Inc. Eugene, OR.
- Patterson, G. R., Forgatch, M. S., & DeGarmo, D. S. (2010). Cascading effects following intervention. *Development & Psychopathology, 22*, 949-970 doi: 10.1017/S0954579410000568
- Sigmarsdóttir, M., Rains, L. A., & Forgatch, M. S. (in press, 2014). Parent Management Training - Oregon Model, In J. J. Ponzetti (Ed.), *Evidence-based parenting education: A global perspective*. New York: Taylor & Francis/Psychology Press.

